



CONTRACTING DIVISION PRE-QUALIFICATION FILE



Doha, Qatar Office
P.O Box 40889
Tel.+974-4693940
Fax.+974-4693941

Abu Dhabi Office
P.O Box 47010
Tel.+971-2-4434422
Fax.+971-2-4465540

Dubai Office
P.O Box 2264
Tel.+971-4-2679095
Fax.+971-4-2679404

Sharjah Head Office
P.O Box 5629
Tel.+971-6-5432436
Fax.+971-6-5434139

Email : adhcd@verger-delporte.ae
mail@verger-delporte.ae
Website : www.verger-delporte.ae

TABLE OF CONTENTS

1.0 INTRODUCTION.....	1
2.0 ORGANISATION CHART.....	2
3.0 SCOPE OF WORKS.....	3
4.0 MARKETING TENDERS.....	6
5.0 DESIGN OFFICE.....	7
6.0 PROJECT EXECUTION.....	8
7.0 INSTALLATION & WARRANTY.....	10
8.0 MAJOR PROJECTS COMPLETED.....	11
9.0 MAJOR ONGOING PROJECTS.....	28
10 JOB REFERENCES.....	40

1.0 INTRODUCTION

Verger Delporte UAE Ltd.'s Electrical and Mechanical Contracting division undertakes contracts on the full electro-mechanical spectrum. This includes Air-conditioning, Electrical, Plumbing, Fire alarm, Fire fighting and Low Voltage Systems which include Public Address System, Central Satellite TV & IPTV Systems, Uninterruptible Power supply System, CCTV System, Access Control System, Home Automation & BMS etc.

Well established over the years, the division has proven its ability in the MEP segment for the quality & standard of work delivered. It has been awarded some of the most prestigious projects, which has made Verger Delporte one of the leading competitive MEP contractor in the UAE. The strong workforce & dedication of every individual has contributed towards the success of the organization.

Verger Delporte has diversified its activities into 5 operating divisions which are:

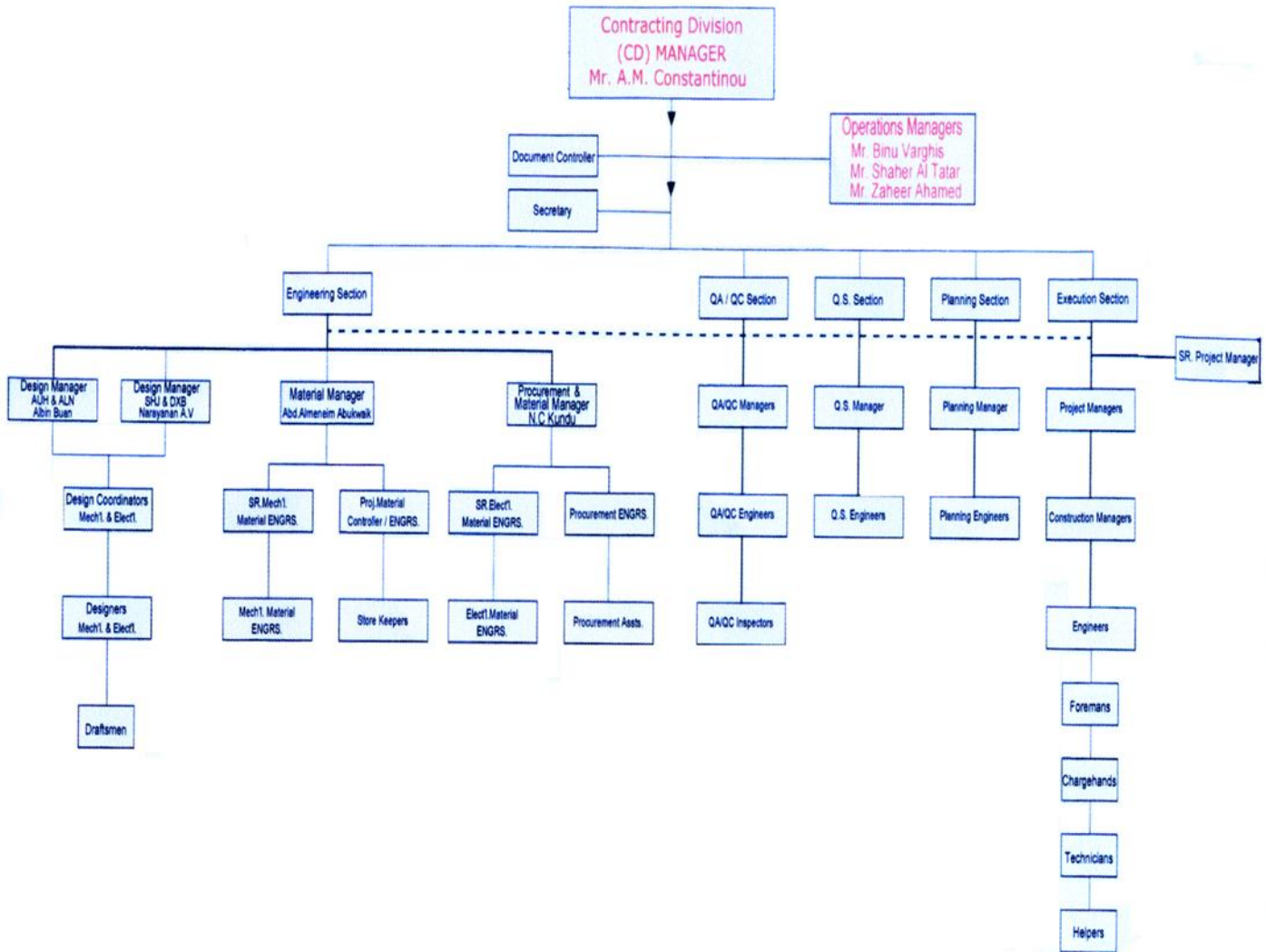
- Contracting Division
- Switchgear Manufacturing Division
- Trading Division
- IT Division
- Low Voltage Division

The 5 supporting Departments are:

- QHSE Department
- Finance Department
- Administration Department
- Logistics Department
- Marketing & Business Development Department



2.0 ORGANISATION CHART



3.0 SCOPE OF WORK

The division has been dimensioned to cope up with comprehensive Electromechanical Works which include:

- Project Management
- Project Engineering
- Design
- Materials Selection and Procurement
- Installation
- Testing and Commissioning
- Maintenance

This division operates strictly under the applicable technical and safety requirements, through a thorough knowledge of B.S. and I.E.C. Standards as well as Regulations imposed by the local Government departments.

In addition to its core operations located in Sharjah head office it has also set up regional branches in Dubai, Abu Dhabi, Al Ain and Qatar, in order to meet the market growing needs.

Below is a listing of the specialized sectors in which the division has excelled in:

- Commercial and Residential Buildings
- Public and Private Establishments
- Hotels and Resorts
- Industrial Facilities / Workshops / Warehouses
- Vehicular closed parking facilities
- Hangars and Airport Terminals
- Hospital and Medical Facilities
- Accommodation Facilities
- Educational Facilities / Universities / Schools
- Palaces and Private Villas

3.0 SCOPE OF WORK

Below is a listing of the various work activities in which the division excels

Electrical

- Power Transmission / Distribution
- Residential / Commercial / Industrial / Oil field Installations
- Uninterruptible Power Supply Systems
- Fire Detection Systems / Water Leak Detection Systems / Fire Alarm System
- Earthing and Lightning Protection Systems
- Public Address Systems
- Central / Satellite TV systems / IPTV Systems
- Telephone & Intercom Systems
- Interior & Exterior Lighting
- Central Battery Emergency Lighting Systems
- Closed Circuit TV Systems
- Access Control & Security Systems
- Building Management Systems



HVAC System

- Central Heating
- Air Conditioning
- Chilled Water Systems
- Ducted & Non-ducted Split Unit Systems
- VRV System
- Package Units
- Ventilation – Fresh Air & Extract Systems
- HVAC Controls and Monitoring Systems





3.0 SCOPE OF WORK

Plumbing

- Cold Water Distribution
- Hot Water Distribution (Local Water Heater / Central Hot Water System)
- Domestic Water Filtration Systems
- Water Leak Detection Systems
- Central Cooling Systems
- Water Features and Irrigation Systems
- Drainage – Soil/Waste and Vent Systems
- Storm Water Drainage
- Sewage Treatment Plants
- Waste Water Treatment Systems



Fire Fighting

- Fire Hose Systems
- Fire Detection Systems
- Sprinkler systems
- Fire Extinguishers
- Fire Suppression Systems

Fuel/Oil – Storage and distribution

Compressed Air systems

LP-GAS Systems



4.0 MARKETING TENDERS

Entrusted to the Marketing and Business Development Manager, who closely coordinates with the Division's Manager and the General Manager, the duties require an acute knowledge of the market and its related chain of decisions: end users, local authorities, consultants, main contractors...

From the very early stages of contact with the client up to the internal contract review, the Marketing and Business Development manager will act as a facilitator, to obtain the very best level of understanding between the client the company, which will be later be bound by a flawless contract within the proven limits of Verger Delporte UAE Ltd.

Under the supervision of a qualified engineer, a sound and efficient business approach to attain the best technical solutions devised asserting to the needs of the client.

Based on the updated list from approved suppliers, it will be the task of the Tender & Estimation Manager to make a right decision between the suppliers based on whose materials quality/price ratio together with after sales support will best fit the client's particular requirements.

Always on a technological watch, the engineers will strive to make the client benefit from the latest market development in electro-mechanical installation, if allowed to do so.

Worked out in close association with the other sections, if required, the offer will be subsequently checked by the management to ensure its relevance and suitability.

5.0 DESIGN OFFICE

Thoughtfully entrusted to a qualified Design Manager, the Design tasks are split up between the Electrical and the Mechanical sections, in view to preserve the best of specialized competencies and foster maximum creativity in the two domains.

From the initial job assignments, optimally planned within the general time schedule, the project joint works are all the more facilitated that the designers carry out their duties in Project-per-project setup.

The electrical and mechanical drawings, designed under the latest widely covered AutoCAD software, on powerful PCs have to pass through successive control steps which include the checking phase by the Design Coordinators and Design Managers often followed by an additional management verification for complex jobs, before the final submittal for consultant approval.

Profiting by the latest technology which includes a high capacity A0 plotter, the design section's output has substantially grown in production, quality and reliability, giving nothing but entire satisfaction to the clients.



6.0 PROJECT EXECUTION

Adequately programmed from a collaboration of all sections (Tender, Design, Material, Procurement, Logistic and Site teams), which produce a collection of expert advise, the project is entrusted to the Operations Manager, under the overall supervision of the Contracting Division Manager.

Drawings and materials approval by the consultant stand as the starting point of all related site works, to be executed, tested, commissioned, and handed over to the client, within the allotted times.

Suitably manned as per the updated workload, the site is initially organized according to the specification of the job; hierarchical levels optimized in order to get the best output from responsible and earnest personnel. Current site competencies and resources can be described as follows:

- Project Managers on assignment, exercising functional responsibilities
- Incumbent Site Engineers, guiding Foremen or Team-Leaders
- Senior, Junior Electricians or Plumbers
- Safe and well-suited transport and handling means

Carefully controlled quality tools and electrical appliances, make up actual conditions for a quality and productive job on site; source of satisfaction from the contractor to the end user.

The installation phase of the works, will be undertaken in accordance with the scope of work, requirements of the Quality Plan, Method Statements and to time constraints as defined in the approved coordinated Installations Program.

6.0 PROJECT EXECUTION

The organization chart will indicate structure of engineering and installation staff assuring proper & clear channels of communication, accountability and responsibility of the Project Team

Detailed method statements where considered appropriate to the needs of project will be prepared to ensure the minimum deviation and accuracy on task execution.

All project engineers will be reporting to the Construction Manager and coordinating with other main contractor and sub-contractor personnel for maintaining quality and achieving program requirements.

Example of Project Execution Team (C1 & C4 Najmat – Reem Island, Abu Dhabi)



7.0 INSTALLATION & WARRANTY

INSTALLATION

Clearly of outstanding concerns for the consultant, the main contractor or end user, the Final visual inspection, Pre-commissioning, Commissioning duties are entrusted to duly authorized personnel, often certified by local authorities for specific type of operations.

These people are reckoned among site people, allotted with the appropriate equipment and measuring instruments which are carefully controlled (outside calibration when needed, program of internal periodical check, etc.)

The client is given an Operation and Maintenance Manual, where it will hold all relevant information necessary for a safe and efficient operating of the installation

WARRANTY

The client can call Verger Delporte UAE Ltd for intervention within the warranty period stipulated by the contracts (a defined period from the site hand over) provided the issue prior assessment confirms it is in our scope of work.

An experienced team, equipped with proper tools or/and instruments, conduct the required maintenance, using the already released Instructions and the Maintenance Manual.



8.0 MAJOR COMPLETED PROJECTS



PROJECT	: OFFICER'S ACCOMMODATION- ZONE C 96 VILLAS
DESCRIPTION	: 96VILLAS WITH TOTAL BUILT UP AREAS OF 55,680 SQMT.
LOCATION	: ABU DHABI
CLIENT	: G.H.Q ARMED FORCES
CONSULTANT	: KHATIB & ALAMI
MAIN CONTRACTOR	: DHABI CONTRACTING LLC
COMPLETED	: OCTOBER 2014
VALUE IN DHS.	: 33,300,000.00

SCOPE OF WORKS

➤HVAC

The works include supply, installation, testing & commissioning of Centrifugal inline exhaust fans, Fresh air treatment units, DX outdoor / indoor units complete with duct works and copper pipe works.

➤Plumbing

The works include supply, installation, testing & commissioning of Sanitary fixtures complete with accessories, Drainage accessories including flower bed drain, floor drain, floor drain, gully traps, manhole covers, drainage pipes and fittings, insulated tanks, pumps with all accessories, valves, controls (sump pump, transfer pump, booster pumpset, hot water circulation pump), solar water heaters including solar panels, circulation pumps, calorifiers, hot and cold water supply pipe work.

➤Electrical

The works include supply, installation, testing & commissioning of switchgears (SMDB, DBs, Capacitor bank), cable works c/w cable trays, trunkings, KWH meters (as per ADDC / Estidama), wiring accessories, SMATV system (containment only), telephone system, audio intercom system, light fixtures including emergency lights, stand alone heat detectors.



8.0 MAJOR COMPLETED PROJECTS



PROJECT DESCRIPTION	: CONSTRUCTION, COMPLETION & MAINTENANCE OF 433 RESIDENTIAL UNITS IN GHAYATHI WITH TOTAL BUILT UP AREA OF 59, 600 SQMT.
LOCATION	: GHAYATHI, ABU DHABI
CLIENT	: ABU DHABI SERVICES COMPANY PJSC TRADING AL MUSANADA
CONSULTANT	: WS ATKINS
MAIN CONTRACTOR	: DHABI CONTRACTING LLC
COMPLETED	: AUGUST 2014
VALUE IN DHS.	: 17,309,192.00

SCOPE OF WORKS

➤HVAC

The works include installation of Centrifugal inline exhaust fans, DX outdoor / indoor units complete with duct works, copper piping , valves and accessories.

➤Plumbing

The works include installation of sanitary fixtures complete with accessories, manhole covers, insulated tanks, pumps with all accessories, water meter as per ADDC requirement. Installation of Fire extinguishers, fire blanket. Supply and installation of drainage accessories including floor drain, gully traps, drainage pipes and fittings, valves, water heaters, water meter cabinet, hot and cold water supply pipe work.

➤Electrical

The works include installation of switchgear, (SMDB, DBs, capacitor banks), light fixtures including emergency lights, video intercom system, supply and installation of cable works c/w cable tray, trunking, etc., isolators, KWH meter complete with cabinets and stand alone heat detectors.



8.0 MAJOR COMPLETED PROJECTS



PROJECT	: AMBULATORY CLINICS CONTRACT # 181
DESCRIPTION	: 3 Nos HEALTH CLINIC WITH TOTAL BUILT UP AREA OF 39,304 SQMT.
LOCATION	: AL AIN
CLIENT	: SEHA
CONSULTANT	: HDP (OVERSEAS) LTD
MAIN CONTRACTOR	: CIVIL POWER GENERAL CONTRACTING
COMPLETED	: JULY 2014
VALUE IN DHS.	: 27,287,000.00

SCOPE OF WORKS

➤HVAC

The works include the supply, installation, testing & commissioning of air cooled chillers (6 Nos with total cooling capacity of 730 TR), package units (4 Nos with total cooling capacity of 85 TR), primary & secondary chilled water pumps, fresh air handling units, fan coil units, electric duct heater, variable air volume units, closed control units & toilet extract fans with all associated duct works, pipe works and controls.

➤Plumbing

The works include the supply, installation, testing & commissioning of GRP water tanks, transfer & booster pump sets, central hot water calorifiers, central water filtration and drainage systems with all associated pipe works.

➤Fire Fighting

The works include the supply, installation, testing & commissioning of fire pumps, automatic hose reel, dry risers with landing valves, foam, and clean agent systems with all associated pipe works.

➤Electrical

The works include the supply, installation, testing & commissioning of , LV panels, generators, sub main & final distribution boards, lighting, power, earthing, public address, staff attendance, nurse call, master clock, CCTV, fire alarm, SMATV& structured cabling systems with all associated containment and cabling. Electrical power supply is fed from 2 Nos 1500 KVA & 1 No 1000 KVA transformers and emergency power supply from 2 Nos 1000 KVA & 1 No 500 KVA generators.



8.0 MAJOR COMPLETED PROJECTS



PROJECT	: C19 CAPITAL HOUSE
DESCRIPTION	: 2B+G+M+2P+22 FLOOR RESIDENTIAL BUILDING WITH TOTAL BUILT UP AREA OF 64,172 SQMT.
LOCATION	: ABU DHABI
CLIENT	: ISLAND OFFICE INVESTMENTS LLC
CONSULTANT	: MAISAM ARCHITECTS & ENGINEERS
MAIN CONTRACTOR	: ALI & SONS CONTRACTING CO. LLC
COMPLETED	: MARCH 2014
VALUE IN DHS.	: 45,773,120.00

SCOPE OF WORKS

➤HVAC

The works include the design, supply, installation, testing & commissioning of secondary chilled water pumps, fresh air handling units with heat recovery wheels, fan coil units, stair well pressurization, car park, kitchen & toilet extract fans with all associated duct works, pipe works and controls. Chilled water for the project (total cooling load of 1,340TR) is fed from the District Cooling Plant

➤Plumbing

The works include the design, supply, installation, testing & commissioning of GRP water tanks, transfer & booster pump sets, central water filtration, drainage and gray water treatment systems with all associated pipe works.

➤Fire Fighting

The works include the design, supply, installation, testing & commissioning of fire pumps, automatic hose reels, landing valves, sprinklers, foam and clean agent systems with all associated pipe works.

➤Electrical

The works include the design, supply, installation, testing & commissioning of LV panels, generator, busbar risers, sub main & final distribution boards, lighting, power, earthing & lightning protection, CO monitoring, access control, gate barrier, CCTV, video intercom, fire alarm & voice evacuation, structured cabling and building management systems with all associated containment and cabling. Electrical power supply is fed from 3 Nos 1500 KVA transformers and emergency power supply from 1 No 600 KVA generator.



8.0 MAJOR COMPLETED PROJECTS



PROJECT	: WATANI RESIDENTIAL DEVELOPMENT, PHASE I
DESCRIPTION	: 303 VILLAS WITH TOTAL BUILT UP AREA OF SQM.
LOCATION	: ABU DHABI
CLIENT	: SOROUH REAL ESTATE
CONSULTANT	: EWAN CONSULTANT
MAIN CONTRACTOR	: PAL TECHNOLOGY
COMPLETED	: APRIL 2013
VALUE IN DHS.	: 68,854,746.00

SCOPE OF WORKS

➤ **HVAC**

The works include the supply, installation, testing & commissioning of ducted split units, kitchen & toilet extract fans with all associated duct works, pipe works and controls.

➤ **Plumbing**

The works include the supply, installation, testing & commissioning of GRP water tanks, transfer & booster pump sets, water heaters and drainage systems with all associated pipe works.

➤ **Electrical**

The works include the supply, installation, testing & commissioning of main, sub main & final distribution boards, lighting, power, earthing, fire alarm, SMATV & structured cabling systems with all associated containment and cabling.



8.0 MAJOR COMPLETED PROJECTS



PROJECT	: WATANI RESIDENTIAL DEVELOPMENT, PHASE 1
DESCRIPTION	: 303 VILLAS
LOCATION	: KHALIFA CITY A
CLIENT	: SOROUH REAL ESTATE
CONSULTANT	: PROJECT MANAGEMENT & DEVELOPMENT CONSULTANT
CONTRACTOR	: PAL TECHNOLOGY
COMPLETED	: APRIL 2013
VALUE IN DHS.	: 17,932,873.00

SCOPE OF WORK

➤ **MEP Infrastructure Works**

The works includes supply, installation, testing & commissioning of sewerage, storm water, potable water, irrigation and fire fighting networks for 303 villas



8.0 MAJOR COMPLETED PROJECTS



PROJECT	: NOVOTEL & IBIS HOTEL
DESCRIPTION	: 4B+G+25F HOTEL WITH TOTAL BUILT UP AREA OF 118,000 SQMT.
LOCATION	: ABU DHABI
CLIENT	: H.H.SH.AHMED BIN SAIF MOHAMMED AL NAHYAN
CONSULTANT	: ACG
MAIN CONTRACTOR	: CATIC
COMPLETED	: OCTOBER 2012
VALUE IN DHS.	: 124,024,934.00

SCOPE OF WORKS

➤HVAC

The works include the supply, installation, testing & commissioning of air cooled chillers (8 Nos with total cooling capacity of 1,880 TR), primary & secondary chilled water pumps, fresh air handling units with heat recovery wheels, fan coil units, stair well pressurization, car park, kitchen & toilet extract fans with all associated duct works, pipe works and controls.

➤Plumbing

The works include the supply, installation, testing & commissioning of GRP water tanks, transfer & booster pump sets, central hot water calorifiers, central water filtration and drainage systems with all associated pipe works.

➤Fire Fighting

The works include the supply, installation, testing & commissioning of fire pumps, automatic hose reel, dry risers with landing valves, sprinkler, kitchen hood, foam, and clean agent systems with all associated pipe works.

➤Electrical

The works include the supply, installation, testing & commissioning of HV panels, transformers, LV panels, generators, sub main & final distribution boards, lighting, power, earthing & lightning protection, CO monitoring, access control, CCTV, audio visual, fire alarm & voice evacuation, dimming control, structured cabling, IPTV & media hub, building management & energy saving systems with all associated containment and cabling. Electrical power supply is fed from 6 Nos 1500 KVA transformers and emergency power supply from 2 Nos 600 KVA generators.



8.0 MAJOR COMPLETED PROJECTS



PROJECT	: AL YASSAT GLORIA HOTEL APARTMENT
DESCRIPTION	: B+G+40 HOTEL APARTMENT WITH TOTAL BUILT UP AREA OF 101,955 SQMT.
LOCATION	: DUBAI
CLIENT	: AL GAITH HOLDING
CONSULTANT	: NATIONAL ENGINEERING BUREAU
MAIN CONTRACTOR	: DHABI CONTRACTING
COMPLETED	: DECEMBER 2007
VALUE IN DHS.	: 120,000,000.00

SCOPE OF WORKS

➤HVAC

The works include the design, supply, installation, testing & commissioning of water cooled chillers (2 Nos, 11kV chillers with total cooling capacity of 3,600TR), cooling tower (4 cells forced draft type with 16,419 Kw heat rejection capacity), condenser water pumps, plate heat exchangers, primary, secondary & tertiary chilled water pumps, fresh air handling units with heat recovery wheels, fan coil units, stair well pressurization, car park, kitchen & toilet extract fans with all associated duct works, pipe works and controls.

➤Plumbing

The works include the design, supply, installation, testing & commissioning of GRP water tanks, transfer & booster pump sets, central gas fired hot water boiler with calorifiers, central water filtration, domestic water cooling and drainage systems with all associated pipe works.

➤Fire Fighting

The works include the design, supply, installation, testing & commissioning of fire pumps, automatic hose reel, dry risers with landing valves, sprinkler, kitchen hood, foam, and clean agent systems with all associated pipe works.

➤ Electrical

The works include the design, supply, installation, testing & commissioning of HV panels (for chillers), LV panels, generator, sub main & final distribution boards, lighting, power, earthing & lightning protection, CO monitoring, access control, gate barrier, CCTV, audio visual, fire alarm & voice evacuation, SMATV, dimming control, structured cabling, video intercom, building management & energy saving systems with all associated containment and cabling. Electrical power supply is fed from 9 Nos 1500 KVA transformers and emergency power supply from 1 No 1000 KVA generator.



8.0 MAJOR COMPLETED PROJECTS



PROJECT	: UAE UNIVERSITY
DESCRIPTION	: VARIOUS FACILITY BLOCKS WITH TOTAL BUILT UP AREA OF 285, 249 SQMT.
LOCATION	: AL AIN
CLIENT	: MUBADALA
CONSULTANT	: COX
MAIN CONTRACTOR	: OGER ABU DHABI
COMPLETED	: DECEMBER 2010
VALUE IN DHS.	: 420,000,000.00

SCOPE OF WORKS

➤HVAC

The works include the supply, installation, testing & commissioning of fresh air handling units with run around coils, fan coil units, humidifiers, dehumidifiers, variable air volume units, duct heaters, laboratory fume, spectrometer & calorifier extract systems, car park, kitchen & toilet extract fans with all associated duct works, pipe works and controls. Chilled water for the project (30 buildings with total cooling load of 16,000 TR) is fed from Tabreed district cooling plant.

➤Plumbing

The works include the supply, installation, testing & commissioning of GRP water tanks, transfer & booster pump sets, central hot water calorifiers, domestic water cooling and drainage systems with all associated pipe works.

➤Fire Fighting

The works include the design, supply, installation, testing & commissioning of automatic hose reel, dry risers with landing valves, sprinkler, kitchen hood, foam, and clean agent systems with all associated pipe works.

➤Electrical

The works include the supply, installation, testing & commissioning of LV panels, sub main & final distribution boards, lighting, power, earthing & lightning protection, CO monitoring, access control, CCTV, fire alarm & voice evacuation, SMATV, dimming control, structured cabling with real time monitoring & building management systems with all associated containment and cabling. Electrical power supply is fed from 11 Nos 1500 KVA & 22 Nos 1000 KVA transformers.



8.0 MAJOR COMPLETED PROJECTS



PROJECT	: RITZ CARLTON HOTEL
DESCRIPTION	: 340 HOTEL ROOM & SUITS
LOCATION	: DUBAI
CLIENT	: UNION PROPERTIES
CONSULTANT	: HYDER MIDDLE EAST
MAIN CONTRACTOR	: TARGET / BUGUES
COMPLETED	: MARCH 2009
VALUE IN DHS.	: 188,500,000.00

SCOPE OF WORKS

➤HVAC

The works include the design, supply, installation, testing & commissioning of plate heat exchangers, primary & secondary chilled water pumps, fresh air handling units, fan coil units, stair well pressurization, car park, kitchen & toilet extract fans with all associated duct works, pipe works and controls. Chilled water for the project (total cooling load of 6,140 TR) is fed from Empower district cooling plant.

➤Plumbing

The works include the design, supply, installation, testing & commissioning of GRP water tanks, transfer & booster pump sets, central hot water boilers, central water filtration, rain water collection and drainage systems with all associated pipe works.

➤Fire Fighting

The works include the design, supply, installation, testing & commissioning of fire pumps, automatic hose reel, dry risers with landing valves, sprinkler, kitchen hood, foam, and clean agent systems with all associated pipe works.

➤Electrical

The works include the design, supply, installation, testing & commissioning of, LV panels, generator, sub main & final distribution boards, lighting, power, earthing & lightning protection, CO monitoring, access control, gate barrier, CCTV, audio visual, fire alarm & voice evacuation, IPTV, dimming control, structured cabling, central battery & building management systems with all associated containment and cabling. Electrical power supply is fed from 14 Nos 1500 KVA transformers and emergency power supply from 1 No 1750 KVA & 1 No 1250 KVA generators.



8.0 MAJOR COMPLETED PROJECTS



PROJECT	: ETIHAD AIRWAYS HQ BUILDING COMPLEX
DESCRIPTION	: ETIHAD HQ BUILDING & TRAINING ACADEMY WITH TOTAL BUILT UP AREA OF 74,400 SQMT.
LOCATION	: ABU DHABI
CLIENT	: ETIHAD AIRWAYS
CONSULTANT	: ACG
MAIN CONTRACTOR	: AL GHAFLY
COMPLETED	: AUGUST 2008
VALUE IN DHS.	: 46,300,000.00

SCOPE OF WORKS

➤HVAC

The works include the supply, installation, testing & commissioning of plate heat exchangers, primary & secondary chilled water pumps, fresh air handling units with heat recovery wheels, fan coil units, stair well pressurization, car park, kitchen & toilet extract fans with all associated duct works, pipe works and controls. Chilled water for the project (total cooling load of 1,200 TR) is fed from district cooling plant.

➤Plumbing

The works include the supply, installation, testing & commissioning of GRP water tanks, booster pump sets and drainage systems with all associated pipe works.

➤Fire Fighting

The works include the design, supply, installation, testing & commissioning of fire pumps, automatic hose reel, dry risers with landing valves, sprinkler, kitchen hood, foam, and clean agent systems with all associated pipe works.

➤ Electrical

The works include the supply, installation, testing & commissioning of, LV panels, generator, sub main & final distribution boards, lighting, power, earthing & lightning protection, CO monitoring, access control, gate barrier, CCTV, audio visual, fire alarm & voice evacuation, SMATV, dimming control, structured cabling & building management systems with all associated containment and cabling. Electrical power supply is fed from 4 Nos 1500 KVA transformers and emergency power supply from 1 No 800 KVA & 1 No 350 KVA generators.



8.0 MAJOR COMPLETED PROJECTS



PROJECT	: ABU DHABI UNIVERSITY NEW CAMPUS AT KHALIFA CITY
DESCRIPTION	: CLASS ROOM BUILDINGS, LIBRARY, CANTEEN & OTHER FACILITIES WITH TOTAL BUILT UP AREA OF 62,968 SQMT.
LOCATION	: ABUDHABI
CLIENT	: ABU DHABI UNIVERSITY
CONSULTANT	: ARKONSULT
MAIN CONTRACTOR	: AL MERAIKHI
COMPLETED	: JANUARY 2008
VALUE IN DHS.	: 24,000,000.00

SCOPE OF WORK

➤ **ELECTRICAL**

The works include the supply, installation, testing & commissioning of HV panels, LV panels sub main & final distribution boards, earthing & lightning protection, structured cabling, audio visual, fire alarm & voice evacuation, lighting control and public address systems with all associated containment cabling. Electrical power supply is fed from 5 Nos 1500 KVA transformers and emergency power supply from 1 No 1000 KVA generator.



8.0 MAJOR COMPLETED PROJECTS



PROJECT	: GLORIA HOTEL
DESCRIPTION	: B+G+40F HOTEL WITH TOTAL BUILT UP AREA OF 148,605 SQMT.
LOCATION	: DUBAI
CLIENT	: AL GAITH HOLDING
CONSULTANT	: NATIONAL ENGINEERING BUREAU
MAIN CONTRACTOR	: DHABI CONTRACTING
COMPLETED	: DECEMBER 2007
VALUE IN DHS.	: 130,000,000.00

SCOPE OF WORKS

➤HVAC

The works include the design, supply, installation, testing & commissioning of water cooled chillers (2 Nos, 11kV chillers with total cooling capacity of 4,186 TR), cooling tower (4 cells forced draft type with 17,000 Kw heat rejection capacity), condenser water pumps, plate heat exchangers, primary & secondary chilled water pumps, fresh air handling units with heat recovery wheels, fan coil units, stair well pressurization, car park, kitchen & toilet extract fans with all associated duct works, pipe works and controls.

➤Plumbing

The works include the design, supply, installation, testing & commissioning of GRP water tanks, transfer & booster pump sets, central gas fired hot water boiler with calorifiers, central water filtration, domestic water cooling and drainage systems with all associated pipe works.

➤Fire Fighting

The works include the design, supply, installation, testing & commissioning of fire pumps, automatic hose reel, dry risers with landing valves, sprinkler, kitchen hood, foam, and clean agent systems with all associated pipe works.

➤Electrical

The works include the design, supply, installation, testing & commissioning of HV panels (for chillers), LV panels, generator, sub main & final distribution boards, lighting, power, earthing & lightning protection, CO monitoring, access control, gate barrier, CCTV, audio visual, fire alarm & voice evacuation, SMATV, dimming control, structured cabling, video intercom, building management & energy saving systems with all associated containment and cabling. Electrical power supply is fed from 10 Nos 1500 KVA transformers and emergency power supply from 1 No 1000 KVA generator.



8.0 MAJOR COMPLETED PROJECTS



PROJECT	: AL YASSAT GLORIA HOTEL APARTMENT
DESCRIPTION	: G+40 HOTEL APARTMENT
LOCATION	: DUBAI
CLIENT	: AL GAITH HOLDING
CONSULTANT	: NATIONAL ENGINEERING BUREAU
MAIN CONTRACTOR	: JC MCLEAN INTERNATIONAL FZCO
COMPLETED	: DECEMBER 2011
VALUE IN DHS.	: 25,000,000.00

SCOPE OF WORKS

➤ MEP Interior Works

The supply, installation, testing & commissioning of all MEP items for the interior fit out works



8.0 MAJOR COMPLETED PROJECTS



PROJECT	: ROTANA BEACH RESORT
DESCRIPTION	: B+G+4F RESORT & 10 CHALETs WITH TOTAL BUILT UP AREA OF 23, 356 SQM.
LOCATION	: FUJAIRAH
CLIENT	: H.H.SH. SUROOR BIN MOHD. AL NAHYAN
CONSULTANT	: ACG
MAIN CONTRACTOR	: CATIC
COMPLETED	: DECEMBER 2006
VALUE IN DHS.	: 30,000,000.00

SCOPE OF WORKS

➤HVAC

The works include the design, supply, installation, testing & commissioning of air cooled chillers (4 Nos with total cooling capacity of 800 TR), primary & secondary chilled water pumps, fresh air handling units, fan coil units, kitchen & toilet extract fans with all associated duct works, pipe works and controls.

➤Plumbing

The works include the design, supply, installation, testing & commissioning of GRP water tanks, transfer & booster pump sets, central hot water calorifiers, central water filtration and drainage systems with all associated pipe works.

➤Fire Fighting

The works include the design, supply, installation, testing & commissioning of fire pumps, automatic hose reel, dry risers with landing valves, external fire hydrants, sprinkler, kitchen hood, foam, and clean agent systems with all associated pipe works.

➤ Electrical

The works include the design, supply, installation, testing & commissioning of LV panels, generator, sub main & final distribution boards, lighting, power, earthing & lightning protection, access control, gate barrier, CCTV, audio visual, fire alarm & voice evacuation, SMATV, dimming control, structured cabling, & building management systems with all associated containment and cabling. Electrical power supply is fed from 3 Nos 2000 KVA transformers and emergency power supply from 1 No 500 KVA generator.



8.0 MAJOR COMPLETED PROJECTS



PROJECT	: BURJ OLD TOWN
DESCRIPTION	: 13 RESIDENTIAL BLOCKS WITH TOTAL BUILT UP AREA OF 156,853 SQMT.
LOCATION	: DUBAI
CLIENT	: EMAAR
CONSULTANT	: ALLIED
MAIN CONTRACTOR	: AL FUTTAIM
COMPLETED	: DECEMBER 2006
VALUE IN DHS.	: 180,000,000.00

SCOPE OF WORKS

➤ HVAC

The works include the supply, installation, testing & commissioning of plate heat exchangers, tertiary chilled water pumps, fresh air handling units with recuperator, fan coil units, car park, kitchen & toilet extract fans with all associated duct 3,200 TR) is fed from Tabreed district cooling plant.

➤ Plumbing

The works include the supply, installation, testing & commissioning of GRP water tanks, transfer & booster pump sets and drainage systems with all associated pipe works.

➤ Fire Fighting

The works include the design, supply, installation, testing & commissioning of fire pumps, automatic hose reel, dry risers with landing valves, sprinkler, kitchen hood, foam, and clean agent systems with all associated pipe works.

➤ Electrical

The works include the supply, installation, testing & commissioning of LV panels, generator, sub main & final distribution boards, lighting, power, earthing & lightning protection, CO monitoring, access control, gate barrier, CCTV, audio visual, fire alarm & voice evacuation, SMATV, dimming control, structured cabling, video intercom, central battery & building management systems with all associated containment and cabling. Electrical power supply is fed from 16 Nos 1500 KVA transformers and emergency power supply from 2 Nos 350 KVA, 2 Nos 400 KVA & 2 Nos 430 KVA generators.



8.0 MAJOR COMPLETED PROJECTS



PROJECT DESCRIPTION	: COMMERCIAL & RESIDENTIAL BUILDING C40, RAWDHAT : 4B+G+2P+6 FLOOR OFFICES+5 FLOOR RESIDENTIAL BUILDING WITH TOTAL BUILT UP AREA OF 15,278 SQMT.
LOCATION	: ABU DHABI
CLIENT	: ALI & SONS CO. LLC
CONSULTANT	: IAN BANHAM & ASSOCIATES
MAIN CONTRACTOR	: ALI & SONS CONTRACTING CO. LLC
COMPLETED	: AUGUST 2015
VALUE IN DHS.	: 18,571,622.00

SCOPE OF WORKS

➤HVAC

The works include the supply, installation, testing & commissioning of Air cooled chillers (3 Nos of 241 TR), primary and secondary Chilled water pumps, Air handling units, Fresh air handling units with heat recovery wheels, Fan coil units and Fans with all associated duct works, pipe works and controls.

➤Plumbing

The works include the supply, installation, testing & commissioning of Water tanks, Pump sets, Central water filtration, Water heaters, Water meters and Valves with all associated pipe works.

➤Fire Fighting

The works include the supply, installation, testing & commissioning of Fire pumps, Automatic hose reels, Landing valves, Sprinklers, Foam and Clean agent systems with all associated pipe works.

➤Electrical

The works include the supply, installation, testing & commissioning of LV panels, Generator, Busbar risers, Sub main & Final distribution boards, Lighting, Power, Earthing & Lightning protection, Home automation system, CO monitoring, Access control, Gate barrier, CCTV, Video intercom, Fire alarm & voice evacuation, Structured cabling and Building management systems with all associated containment and cabling. Electrical power supply is fed from 2 Nos of 1500 KVA transformers and emergency power supply from 1 No of 600 KVA generator.



9.0 ONGOING PROJECTS



PROJECT	: RESIDENTIAL & COMMERCIAL BUILDINGS IN DUBAI INVESTMENT PARK @ PLOT NO: 598-1204 & 598-1207
DESCRIPTION	: GROUND + 6 FLOORS - 4 NUMBERS TYPICAL BUILDINGS WITH TOTAL BUILT UP AREA OF 93, 210 SQMT.
LOCATION	: DUBAI INVESTMENT PARK, DUBAI, UAE
CLIENT	: RASHID BIN DARWISH AL KETBI.
CONSULTANT	: M/S EMIRATES INNOVATION ENGINEERING CONSULTANTS
MAIN CONTRACTOR	: JIANGSU NANTONG LIU JIAN CONSTRUCTION GROUP CO.LTD
COMPLETION	: JUNE 2016
VALUE IN DHS.	: 44,000,000.00

SCOPE OF WORKS

➤ **HVAC**

The work include the supply, installation, testing & commissioning of HVAC system of 4 Buildings (with a total cooling load of 2,720TR). Each building comprises of Fresh Air Handling Units with heat recovery, Fan Coil Units, Chilled Water Pumps, Heat Exchangers, Pressurization Unit, Chemical Dosing & Expansion tanks, Kitchen & Toilets Extract Fans, Smoke and Pressurization Fans along with the associated ductworks, chilled water pipe works and controls.

➤ **Plumbing**

The works include the supply, installation, testing & commissioning of Drainage, Storm water, Water Supply System of 4 Buildings. Each building comprises of GRP Storage Tanks, Transfer Pump, Booster Pumps, Sump Pump and Filtration System along with all associated pipe works and control system.

➤ **Fire Fighting**

The works include the supply, installation, testing & commissioning of Fire Fighting System of 4 Buildings. Each building comprises of an Automatic Sprinkler System, Fire Pumps and controls, Hose Reels and Portable Fire Extinguisher all in accordance with Local Authority and NFPA.

➤ **Electrical**

The works include the supply, installation, testing & commissioning of LV panels, Automatic capacitor bank panels, sub-main & final distribution boards, MCC panel with VFD control, 250KVA standby diesel generator set with auto change over panel, cabling / wiring for lighting and power distribution. Electrical power supply is fed from 1500 KVA Transformer and 1 number of Free standing multi cubicle type form-4 L.V. switchgear board as specified in 4 buildings. Low Current system consist- Fire Alarm system, Emergency lighting system, SMATV & Telephone etc.



9.0 ONGOING PROJECTS



PROJECT	: WEDDING HALL IN NORTHERN EMIRATES
DESCRIPTION	: PLOT NO. 4244454 AL WARQA'A- 4 TH WITH TOTAL BUILT UP AREA OF 7, 114 SQMT.
LOCATION	: DUBAI, UAE
CLIENT	: M/S KHALIFA BIN ZAYED AL NAHYAN FOUNDATION
CONSULTANT	: M/S DESIGNERS TEAM CONSULTING ENGINEERS
MAIN CONTRACTOR	: EMIRATES BELBADI CONTRACTING CO. LTD
COMPLETION	: MARCH 2016
VALUE IN DHS.	: 10,300,000.00

SCOPE OF WORKS

➤HVAC

The works include the supply, installation, testing & commissioning of Air cooled chillers (4 Nos with total cooling capacity of 500 TR), chilled water pumps, Air Handling units, Fresh Air Handling Units with Heat recovering units, Pressurization units, Chemical Dosing & Expansion tanks, Kitchen & Toilet Extract Fans with associated duct work, Chilled water pipe works and Controls.

➤Plumbing

The works include the supply, installation, testing & commissioning of Drainage, Storm water, Water supply system with 4nos. GRP storage tank, Transfer pumps set (Duty, Standby & Jockey), Booster Pumps- Duty / Standby (2 set) Filtration System / UV sterilizer with all associated pipe works and Control system.

➤Electrical

The works include the supply, installation, testing & commissioning of LV panels, Automatic capacitor bank panels, sub-main & final distribution boards, MCC panel with VFD control, 600KVA standby diesel generator set with auto change over panel, earthing & lightning protection system, lighting, power, fire alarm, central battery, CCTV, MATV, Telephone, Audio/Video, Dimming & Parking Management systems. Electrical power supply is fed from 1500 KVA Transformer and 2nos. Free standing multi cubicle type form-4 L.V. switchgear board and emergency power is fed from 1 No. 600 KVA generator..



9.0 ONGOING PROJECTS



PROJECT	: NAJMAT RESIDENTIAL BUILDING ON PLOT C1
DESCRIPTION	: 3B+G+2P+23+HEALTH CLUB RESIDENTIAL BUILDING WITH TOTAL BUILT UP AREA OF 34, 220 SQMT.
LOCATION	: AL REEM ISLAND, ABU DHABI
CLIENT	: UNION NATIONAL BANK
CONSULTANT	: ARCHITECTURAL CONSULTING GROUP
MAIN CONTRACTOR	: FIBREX LLC
COMPLETION	: JUNE 2016
VALUE IN DHS.	: 39,236,130.00

SCOPE OF WORKS

➤ **HVAC**

The works include the supply, installation, testing & commissioning of secondary chilled water pumps, fresh air handling units with heat recovery wheels, fan coil units, stair well pressurization, car park, kitchen & toilet extract fans with all associated duct works, pipe works and controls. Chilled water for the project (total cooling load of 1,340 TR) is fed from the District Cooling Plant

➤ **Plumbing**

The works include the supply, installation, testing & commissioning of GRP water tanks, transfer & booster pump sets, central water filtration, drainage and storm water systems with all associated pipe works.

➤ **Fire Fighting**

The works include the supply, installation, testing & commissioning of fire pumps, automatic hose reels, landing valves, sprinklers, foam and clean agent systems with all associated pipe works.

➤ **Electrical**

The works include the supply, installation, testing & commissioning of LV panels, generator, busbar risers, sub main & final distribution boards, lighting, power, earthing & lightning protection, CO monitoring, access control, gate barrier, CCTV, video intercom, fire alarm & voice evacuation, structured cabling and building management systems with all associated containment and cabling. Electrical power supply is fed from 2 Nos 1500 KVA transformers and emergency power supply from 1 No 650 KVA generator.



9.0 ONGOING PROJECTS



PROJECT	: NAJMAT RESIDENTIAL BUILDING ON PLOT C4
DESCRIPTION	: 3B+G+2P+23+HEALTH CLUB RESIDENTIAL BUILDING WITH TOTAL BUILT UP AREA OF 28,649 SQMT.
LOCATION	: AL REEM ISLAND, ABU DHABI
CLIENT	: AL WIFAQ FINANCE COMPANY
CONSULTANT	: ARCHITECTURAL CONSULTING GROUP
MAIN CONTRACTOR	: FIBREX LLC
COMPLETION	: JUNE 2016
VALUE IN DHS.	: 36,236,870.00

SCOPE OF WORKS

➤ **HVAC**

The works include the supply, installation, testing & commissioning of secondary chilled water pumps, fresh air handling units with heat recovery wheels, fan coil units, stair well pressurization, car park, kitchen & toilet extract fans with all associated duct works, pipe works and controls. Chilled water for the project (total cooling load of 1,200TR) is fed from the District Cooling Plant

➤ **Plumbing**

The works include the supply, installation, testing & commissioning of GRP water tanks, transfer & booster pump sets, central water filtration, drainage and storm water systems with all associated pipe works.

➤ **Fire Fighting**

The works include the supply, installation, testing & commissioning of fire pumps, automatic hose reels, landing valves, sprinklers, foam and clean agent systems with all associated pipe works.

➤ **Electrical**

The works include the supply, installation, testing & commissioning of LV panels, generator, busbar risers, sub main & final distribution boards, lighting, power, earthing & lightning protection, CO monitoring, access control, gate barrier, CCTV, video intercom, fire alarm & voice evacuation, structured cabling and building management systems with all associated containment and cabling. Electrical power supply is fed from 2 Nos 1500 KVA transformers and emergency power supply from 1 No 650 KVA generator.



9.0 ONGOING PROJECTS



PROJECT	: PROPOSED BUSINESS BAY MARRIOT RENAISSANCE HOTEL @ PLOT BB A03.38 DUBAI, U.A.E.
DESCRIPTION	: 5B + G+5PODIUMS+19 TYP. FLOORS + SERVICE FLOOR HOTEL BUILDING WITH TOTAL BUILT UP AREA OF 680, 056 SQMT.
LOCATION	: BUSINESS BAY, DUBAI, UAE
CLIENT	: RASHID BIN DARWISH AL KETBI.
CONSULTANT	: M/S PRAKTIKA CONSULTANCY
MAIN CONTRACTOR	: JIANGSU NANTONG LIU JIAN CONSTRUCTION GROUP CO.LTD
COMPLETION	: SEPTEMBER 2016
VALUE IN DHS.	: 54,984,775.00

SCOPE OF WORKS

➤HVAC

The work include the supply, installation, testing & commissioning of HVAC system with total load of 1552 TR fed from District Cooling Plant. The system comprises of Fresh Air Handling Units, Air Handling Units, Fan Coil Units, Chilled Water Pumps, Heat Exchangers, Pressurization Unit, Chemical Dosing & Expansion tanks, Kitchen & Toilets Extract Fans, Smoke and Pressurization Fans along with the associated ductworks , chilled water pipe works and controls.

➤Plumbing

The works include the supply, installation, testing & commissioning of Drainage, Storm water, Water Supply System comprising of GRP Storage Tanks, Water Softener, Transfer Pump, Booster Pumps, Sump Pump and Filtration System along with all associated pipe works and control system.

➤Fire Fighting

The works include the supply, installation, testing & commissioning of Fire Fighting System comprising of an Automatic Sprinkler System, Fire Pumps and controls, Hose Reels and Portable Fire Extinguisher all in accordance with Local Authority and NFPA.

➤Electrical

The works include the supply, installation, testing ,modification & commissioning of LV panels, generators, sub main & final distribution boards, lighting, power, ear thing & lightning protection, CO monitoring, access control, CCTV, audio visual, fire alarm & voice evacuation, dimming control, structured cabling, IPTV, signage, building management & Room management systems with all associated containment and cabling. Electrical power supply is fed from 3Nos 1500 KVA, 1No of 1000 KVA transformers and emergency power supply from 1 No 1000 KVA & 1 No 275 KVA generators.



9.0 ONGOING PROJECTS



PROJECT	: AIN AL FAYDA EMIRATI HOUSING PROGRAMME, PHASE I
DESCRIPTION	: 1000 VILLAS WITH TOTAL BUILT UP AREA OF 405,000 SQMT.
LOCATION	: AL AIN
CLIENT	: ABU DHABI URBAN PLANNING COUNCIL
DESIGN CONSULTANT	: PROFESSIONAL ARABIAN CONSULTING ENGINEERS (PACE)
SUPERVISION CONSULTANT	: M/s.AL SALAM
MAIN CONTRACTOR	: M/s.TROJAN GENERAL CONTRACTING LLC.
COMPLETION	: AUGUST 2016
VALUE IN DHS.	: 111,800,000.00

SCOPE OF WORKS

➤HVAC

The works include the supply, installation, testing & commissioning of ducted split units, kitchen & toilet extract fans with all associated duct works, pipe works and controls.

➤Plumbing

The works include the supply, installation, testing & commissioning of GRP water tanks, transfer & booster pump sets, solar panel water heaters and drainage systems with all associated pipe works.

➤Electrical

The works include the supply, installation, testing & commissioning of main, sub main & final distribution boards, lighting, power, earthing, fire alarm, SMATV& structured cabling systems with all associated containment and cabling.



9.0 ONGOING PROJECTS



PROJECT	: RDK TOWERS, ABU DHABI
DESCRIPTION	: 3B+G+L+14 FLOORS, 3 NOS. TOWERS MIXED USED DEVELOPMENT
LOCATION	: REEM ISLAND, ABU DHABI
CLIENT	: RASHID BIN DARWISH AL KETBI
CONSULTANT	: MARK HABRE & ASSOCIATES
MAIN CONTRACTOR	: GULF PRECAST COMPANY LLC
COMPLETION	: DECEMBER 2017
VALUE IN DHS.	: COST PLUS

SCOPE OF WORKS

➤HVAC

The works include the design, supply, installation, testing & commissioning of secondary chilled water pumps, fresh air handling units with heat recovery wheels, fan coil units, stair well pressurization, car park, kitchen & toilet extract fans with all associated duct works, pipe works and controls. Chilled water for the project (total cooling load of 1,900 TR) is fed from the District Cooling Plant

➤Plumbing

The works include the design, supply, installation, testing & commissioning of GRP water tanks, transfer & booster pump sets, central water filtration, drainage and gray water treatment systems with all associated pipe works.

➤Fire Fighting

The works include the design, supply, installation, testing & commissioning of fire pumps, automatic hose reels, landing valves, sprinklers, foam and clean agent systems with all associated pipe works.

➤Electrical

The works include the design, supply, installation, testing & commissioning of LV panels, generator, busbar risers, sub main & final distribution boards, lighting, power, earthing & lightning protection, CO monitoring, access control, gate barrier, CCTV, video intercom, fire alarm & voice evacuation, structured cabling and building management systems with all associated containment and cabling. Electrical power supply is fed from 6 Nos 1500 KVA transformers and emergency power supply from 3 Nos 600 KVA generators.



9.0 ONGOING PROJECTS



PROJECT	: MILLENNIUM GOLF RESORT
DESCRIPTION	: LG+UG+6F(TYP)+RF & 60 CHALETS WITH TOTAL BUILT UP AREA OF 53,596 SQMT.
LOCATION	: AL AIN
CLIENT	: AL AIN EQUESTRIAN, SHOOTING & GOLF CLUB
CONSULTANT	: ACG
MAIN CONTRACTOR	: BELBADI
COMPLETION	: ON HOLD – 80% Completed.
VALUE IN DHS.	: 65,500,000.00

SCOPE OF WORKS

➤HVAC

The works include the supply, installation, testing & commissioning of water cooled chillers (3 Nos with total cooling capacity of 2,421 TR), cooling tower (induced draft counter flow type), condenser water pumps, primary & secondary chilled water pumps, fresh air handling units with heat recovery wheels, fan coil units, stair well pressurization, kitchen & toilet extract fans with all associated duct works, pipe works and controls.

➤Plumbing

The works include the supply, installation, testing & commissioning of GRP water tanks, transfer & booster pump sets, central hot water calorifiers, central water filtration and drainage systems with all associated pipe works.

➤Fire Fighting

The works include the design, supply, installation, testing & commissioning of fire pumps, automatic hose reel, dry risers with landing valves, external fire hydrants, sprinkler, kitchen hood, foam, and clean agent systems with all associated pipe works.

➤Electrical

The works include the design, supply, installation, testing & commissioning of LV panels, generator, sub main & final distribution boards, lighting, power, earthing, access control, room management, CCTV, audio visual, fire alarm & voice evacuation, SMATV, dimming control, structured cabling, & building management systems with all associated containment and cabling. Electrical power supply is fed from 7 Nos 1500KVA transformers and emergency power supply from 1 No 500KVA & 1 No 50KVA generators.



9.0 ONGOING PROJECTS



PROJECT	: EMPLOYEE ACCOMODATION.
DESCRIPTION	:GROUND+FOUR FLOORS+PARKING
LOCATION	: DUBAI INVESTMENT PARK,
CLIENT	: GULF PRECAST.
CONSULTANT	: EMIRATES INNOVATION ENGINEERING.
MAIN CONTRACTOR	: JIANGSU NANTONG LIU JIAN
COMPLETION	: ON HOLD
VALUE IN DHS.	: 7,700,000.00

SCOPE OF WORKS

➤HVAC

The works include the design, supply, installation, testing & commissioning of plate heat exchangers & secondary chilled water pumps, fresh air handling units, fan coil units, stair well pressurization, kitchen & toilet extract fans with all associated duct works, pipe works and controls. Chilled water for the project (total cooling load of 509 TR) is fed from Emicool district cooling plant.

➤Plumbing

The works include the design, supply, installation, testing & commissioning of GRP water tanks, transfer & booster pump sets, central water filtration and drainage systems with all associated pipe works.

➤Electrical

The works include the design, supply, installation, testing & commissioning of, LV panels, sub main & final distribution boards, lighting, power, earthing , structured cabling systems with all associated containment and cabling. Electrical power supply is fed from 1 No 1500 KVA transformer .



9.0 ONGOING PROJECTS



PROJECT	: SAADIYAT ROTANA HOTEL AND RESORT COMPLEX
DESCRIPTION	: 327 HOTEL ROOM & SUITS + 13 VILLAS WITH TOTAL BUILT UP AREA OF 47, 484 SQMT.
LOCATION	: ABU DHABI
CLIENT	: AL DIYA HOSPITALITY INVESTMENT LLC
CONSULTANT	: KHATIB AND ALAMI
MAIN CONTRACTOR	: ALI AND SONS / KIER CONSTRUCTION JOINT VENTURE
COMPLETION	: SEPT 2017
VALUE IN DHS.	: 146,000,000.00

SCOPE OF WORKS

➤HVAC

The works include the design, supply, installation, testing & commissioning of secondary chilled water pumps, fresh air handling units, Energy recovery ventilation unit, fan coil units, stair well pressurization, car park, kitchen & toilet extract fans with all associated duct works, pipe works and controls. Chilled water for the project (total cooling load of 1,816 TR) is fed from Viola district cooling plant.

➤Plumbing

The works include the design, supply, installation, testing & commissioning of transfer & booster pump sets, central hot water boilers, solar water heaters, calorifiers, central water filtration, sanitary wares & accessories, rain water collection and drainage systems with all associated pipe works.

➤Fire Fighting

The works include the design, supply, installation, testing & commissioning of fire pumps, automatic hose reel, dry risers with landing valves, sprinkler, foam, and clean agent systems with all associated pipe works.

➤Electrical

The works include the design, supply, installation, testing & commissioning of LV panels, generator, sub main & final distribution boards, lighting, power, earthing & lightning protection, CO monitoring, access control, CCTV, audio visual, fire alarm & voice evacuation, IPTV, lighting control, structured cabling, central battery & building management systems with all associated containment and cabling. Electrical power supply is fed from 5 Nos 1500 KVA transformers and emergency power supply from 1 No 1500 KVA & 1 No 1200 KVA generators.



9.0 ONGOING PROJECTS



PROJECT	: THREE STAR HOTEL ON PLOT No.638 at DIP, DUBAI
DESCRIPTION	: B+G+3 HOTEL APARTMENT WITH TOTAL BUILT UP AREA OF 31, 623 SQMT.
LOCATION	: DIP, DUBAI
CLIENT	: Mr.RASHID BIN DARWISH AL KETBI (RDK)
CONSULTANT	: M/s.EMIRATES INNOVATION ENGINEERING CONSULTANTS
MAIN CONTRACTOR	: Mr.RASHID BIN DARWISH AL KETBI (RDK)
COMPLETION	: JULY 2016
VALUE IN DHS.	: 6,300,850.00

SCOPE OF WORKS

➤ HVAC

The works include the design, supply, installation, testing & commissioning of Package Chillers (3 Nos.with total cooling capacity of 70 TR), complete with chilled water pumps pressurization units, heat exchangers, fresh air handling units, stairwell pressurization, kitchen & toilet extract fans, smoke exhaust fans with all associated duct works, pipe works and controls.



9.0 ONGOING PROJECTS



PROJECT DESCRIPTION	: RESIDENTIAL DEVELOPMENT (Package 2 -482 Villas) at NAD AL SHIBA
LOCATION	: 482 VILLAS WITH TOTAL BUILT UP AREA OF 119, 576 SQMT.
CLIENT	: NAD AL SHIBA, DUBAI
CONSULTANT	: M/s.NAKHEEL PJSC
MAIN CONTRACTOR	: M/s.ARIF & BINTOAK ENGG.CONSULTANTS
COMPLETION	: M/s.UNITED ENGINEERING CONST. (UNEC) L.L.C.
VALUE IN DHS.	: JUNE 2018
	: 129,000,000.00

SCOPE OF WORKS

➤HVAC

The works include the supply, installation, testing & commissioning of ducted split units, kitchen & toilet extract fans with all associated duct works, pipe works and controls.

➤Plumbing

The works include the supply, installation, testing & commissioning of GRP water tanks, transfer & booster pump sets, solar panel water heaters and drainage systems with all associated pipe works.

➤Electrical

The works include the supply, installation, testing & commissioning of main, sub main & final distribution boards, lighting, power, earthing, fire alarm, SMATV& structured cabling systems with all associated containment and cabling.



10.0 JOB REFERENCES

S.No.	Name of Project	Client	Consultant	Nature of Job	Location	Contract Amount in AED.	Completion Date
1	AL AIN BRIDGES	GENERAL HEAD QUARTERS OF UAE ARMED FORCES.	ENGG. CORPORATION OF UAE ARMED FORCES.	ELECTRICAL WORKS	AL AIN	695,000.00	JULY 1980
2	AL HAMRA MILITARY AIRPORT	GENERAL HEAD QUARTES OF UAE ARMED FORCES.	ENGG. CORPORATION OF UAE ARMED FORCES.	ELECTRICAL WORKS	ABU DHABI	2,985,000.00	OCTOBER,1980
3	FRENCH CULTURAL CENTRE	FRENCH CULTURAL CENTRE	COGEM-J.M.REGNAULT & PARTNERS	ELECTRICAL WORKS	ABU DHABI	1,591,000.00	JANUARY, 1981
4	SUWEIHAN EC 499	GENERAL HEAD QUARTERS OF UAE ARMED FORCES.	ENGG. CORPORATION OF UAE ARMED FORCES	ELECTRICAL WORKS	SWEIHAN	12,000,000.00	SEPTEMBER 1981
5	P.S.D. 29 CARAVANS	ARABVAN		ELECTRICAL WORKS	ABU DHABI	224,000.00	DECEMBER 1983
6	DRY GRINDING MILL	ADDCAP	REDPATH DORMAN LONG.	ELECTRICAL WORKS	SAADIYAT ISLAND	1,195,000.00	NOVEMBER 1983
7	DUBAI TOWER COMPLEX	ARBIFT	BUTEC-SOCOMEK	ELECTRICAL WORKS	DUBAI	5,470,000.00	DECEMBER 1983
8	TOTAL ABK	TOTAL ABK		ELECTRICAL WORKS	ABU DHABI	114,000.00	DECEMBER 1984
9	RECREATION COMPLEX	GOVT. OF ABU DHABI	REGNAULT & PARTNERS	ELECTRICAL WORKS	AL AIN	2,188,000.00	FEBRUARY 1984
10	YEMEN HUNT OIL CAMP	ARABVAN		ELECTRICAL WORKS	YEMEN	249,000.00	DECEMBER 1984
11	HILAL MUMBARAK AL MANSOORIE BUILDING	HILAL MUBARAK AL MANSOORIE	MANSOORIE SPECIALISED	ELECTRO MECHANICAL WORKS	ABU DHABI	3,750,000.00	JUNE 1985
12	CORNICHE GOLDEN TOWER	H.E.SH.KHALIFA BIN ZAYED AL NAHYAN	ARAB CONSULTANT	ELECTRO-MECHANICAL WORKS	ABU DHAI	7,460,000.00	DECEMBER 1985
13	CONTRACT 19	WATER & ELECTRICITY DEPT.	DE LEUW CATHER INTERNATIONAL LTD.	UNDER PASS LIGHTING & STREET LIGHTING	ABU DHABI	3,180,000.00	FEBRUARY 1986
14	GHANTOOT RESIDENCE FOR DR.MANA SAEED AL OTAIBA	DR MANA SAEED AL OTAIBA	HALCROW M.E.	ELECTRICAL WORKS	ABU DHABI	1,100,000.00	APRIL 1986



10.0 JOB REFERENCES

S.No.	Name of Project	Client	Consultant	Nature of Job	Location	Contract Amount in AED.	Completion Date
15	SHARJAH TOWERS	H.H.RULER OF SHARJAH	HALCROW GROUP.	ELECTRICAL WORKS	SHARJAH	2,000,000.00	OCTOBER 1986
16	CHAMBER OF COMMERCE BUILDING	PUBLIC WORKS DEPARTMENT, ABU DHABI	SERI RENAULT	ELECTRO MECHANICAL WORKS	ABU DHABI	15,415,000.00	NOVEMBER 1986
17	MECHANICAL WORKSHOP EXTN	TRANSITREX		ELECTRO MECHANICAL WORKS	DUBAI	746,000.00	DECEMBER 1987
18	DOWELL WORKSHOP	DOWELL SCHLUMBERGER			SYRIA	749,000.00	DECEMBER 1987
19	WORKSHOP IN AMENAS	O.A.T.T.			ALGERIA	1,343,000.00	DECEMBER 1987
20	DOWELL WORKSHOP, JABEL ALI BASE	DOWELL	J.M.REGNAULT & PARTNERS		DUBAI	368,000.00	DECEMBER 1987
21	BONDED WARE HOUSE, P.A.J.A.	TRANSITREX	J.M.REGNAULT & PARTNERS	ELECTRICAL WORKS	DUBAI	746,000.00	DECEMBER 1987
22	2 Nos. SCHOOLS AT AL NAKHILAT & AL FALAJ	KHOORY HILL	CAB CONSULTANTS	ELECTRICAL WORKS	SHARJAH	1,195,000.00	DECEMBER 1987
23	EC 756 – GOVERNMENT HEAD QUARTERS	GENERAL HEAD QUARTERS OF UAE ARMED FORCES	ENGG. CORPORATION OF UAE ARMED FORCES.	ELECTRICAL WORKS	ABU DHABI	10,294,000.00	DECEMBER 1988
24	COLD STORAGE	ABU DHABI MUNICIPALITY	AL MARFA	ELECTRICAL WORKS	ABU DHABI	373,000.00	JANUARY 1988
25	TANNERY & DRY UNIT	AL BWARDY INVESTMENT	TANNERY & SKINS INTL.	ELECTRO-MECHANICAL WORKS	JABEL ALI	1,200,000.00	MARCH 1998
26	EC 745 – MILITARY WORKS	GENERAL HEAD QUARTERS OF UAE ARMED FORCES	ENGG. CORPORATION OF UAE ARMED FORCES.	ELECTRICAL WORKS	ABU DHABI	1,472,000.00	MARCH 1988
27	SHARJAH TELEVISION	GOVT. OF SHARJAH	HALCROW GROUP	ELECTRO MECHANICAL WORKS	SHARJAH	14,320,000.00	AUGUST 1988
28	UMM AL NAR SECURITY SYSTEM	GENERAL HEAD QUARTERS OF UAE ARMED FORCES.	THOMSON CSF	ELECTRICAL WORKS	ABU DHABI	4,774,000.00	DECEMBER 1989
29	UMM AL NAR SECURITY SYSTEM	GENERAL HEAD QUARTERS OF UAE ARMED FORCES	THOMSON CSF	ELECTRICAL WORKS	ABU DHABI	497,000.00	DECEMBER 1989



10.0 JOB REFERENCES

S.No.	Name of Project	Client	Consultant	Nature of Job	Location	Contract Amount in AED.	Completion Date
30	ADNIA - VIP LOUNGE	CIVIL AVAIIATION ABU DHABI	JUMA AL MAJID/ FITCH & CO.	ELECTRICAL WORKS – including CHANDELIERS.	ABU DHABI	2,485,000.00	APRIL 1989
31	CENTRAL STORES - ETISALAT	ETISALAT	RIGID CONSTRUCTION	ELECTRICAL WORKS	DUBAI	825,000.00	DECEMBER 1989
32	MINISTRY OF INTERIOR	MINISTRY OF INTERIOR		ELECTRICAL & PLUMBING WORKS	ABU DHABI	775,000.00	DECEMBER 1990
33	DNATA BUILDING	DNATA	GCSS	ELECTRICAL WORKS	DUBAI	600,000.00	DECEMBER 1990
34	VARIOUS LOCATIONS (ALGERIA, SYRIA, QATAR, INDIA, OMAN, EGYPT).	SCHLUMBERGER OVERSEAS	J.M.REGNAULT & PARTNERS	ELECTRO MECHANICAL WORKS	VARIOUS LOCATIONS	1,4019,000.00	DECEMBER 1991
35	VARIOUS LOCATIONS IN UAE (JABEL ALI, DUBAI, ABU DHABI)	SCHLUMBERGER	J.M.REGNAULT & PARTNERS	ELECTRO MECHANICAL WORKS	VARIOUS LOCATIONS	1,616,000.00	DECEMBER 1991
36	FRENCH SCHOOL	ECOLE FRANCAISE	ECOLE FRANCAISE	ELECTRICAL WORKS	SHARJAH	500,000.00	FEBRUARY 1991
37	FINE FAIR COMMERCIAL BLDG	FINE FAIR	EASTERN LTD.	ELECTRICAL WORKS	SHARJAH	765,000.00	FEBRUARY 1991
38	STREET LIGHTING PROJECT – INST 649	WATER AND ELECTRICITY DEPT., ABU DHABI	W.E.D., ABU DHABI	ELECTRICAL WORKS	AL AIN	1,690,000.00	AUGUST 1991
39	BLDGS FOR H.E.SH SULTAN BIN HAMDAN AL NAHYAN	H.E.SH.SULTAN BIN HAMDAN AL NAHYAN	ARAB CONSULTANTS.	ELECTRICAL WORKS	ABU DHABI	2,978,000.00	MAY 1992
40	STREET LIGHTING PROJECT – INST 675	WATER AND ELECTRICITY DEPT., ABU DHABI	W.E.D., ABU DHABI	ELECTRICAL WORKS	AL AIN	2,387,000.00	AUGUST 1992
41	ZAKHER TOWER	H.E.SH.KHADEM BIN BUTTI AL HAMED SONS & DAUGHTERS	SYRCONSULT	ELECTRICAL WORKS	ABU DHABI	2,785,000.00	OCTOBER 1992
42	AL KHAILY BUILDING	AL KHAILY		ELECTRICAL WORKS	ABU DHABI	1,625,000.00	DECEMBER 1992
43	GASCO BAB CAMP	GASCO	SCTP MIDDLE EAST	ELECTRICAL & PLUMBING WORKS	ABU DHABI	8,100,000.00	DECEMBER 1992



10.0 JOB REFERENCES

S.No.	Name of Project	Client	Consultant	Nature of Job	Location	Contract Amount in AED.	Completion date
44	GASCO NEW ASAB CAMP	GASCO	SCTP MIDDLE EAST	ELECTRICAL & PLUMBING	ABU DHABI	9,380,000.00	JUNE 1993
45	BEACH HOTEL ABU DHABI	H.E.SH.SUROOR BIN MOHD AL NAHYAN	IAN BANHAM	ELECTRICAL & PLUMBING WORKS	ABU DHABI	6,808,000.00	JULY 1994
46	AL RAWDA CENTRE	H.E.SH.LATIFA & SHAMMA BINT KHALIFA AL NAHYAN.	DEWAN ARCHITECT & ENGINEERING.	ELECTRICAL WORKS	ABU DHABI	4,575,000.00	AUGUST 1994
47	BUILDING FOR FRENCH SCHOOL	FRENCH SCHOOL	SERI RENAULT	ELECTRICAL & PLUMBING WORKS	DUBAI	565,000.00	SEPTEMBER 1994
48	BUILDINGS FOR H.E.SH. MANSOUR BIN ZAYED AL NAHYAN AND H.E.SH.ABDULLA BIN ZAYED AL NAHYAN	H.E.SH. MANSOUR BIN ZAYED AL NAHYAN AND H.E.SH.ABDULLA BIN ZAYED AL NAHYAN	IAN BANHAM & ASSOCIATES	ELECTRICAL WORKS	ABU DHABI	4,700,000.00	MARCH 1995
49	COMM. BUILDING FOR Mr.KHALID EID AL MUREIKHI	KHALID EID AL MUREIKHI	GODFREY HEATH & SPEARING, KENNEDY & DONKIN	ELECTRICAL & PLUMBING WORKS	ABU DHABI	1,760,000.00	APRIL 1995
50	EQUESTRIAN & RACING CENTRE	H.H. SH. ZAYED BIN SULTAN AL NAHYAN	GIAT INDUSTRIES	ELECTRICAL WORKS	GHANTOOT	3,120,000.00	MAY 1995
51	COMM. BLDG. FOR Mr.NASIR RASHID AL MANA AL MANSOURI	NASIR RASHID AL MANA AL MANSOURI	DEWAN ARCHITECTS & ENGINEERS.	ELECTRICAL & PLUMBING WORKS	ABU DHABI	860,000.00	JULY 1995
52	OFFICE BUILDING FOR H.E. HAMIL BIM KHADIM AL GAITH (AL FARDOUS TOWER)	AL GAITH	ARAB CONSULTANT	ELECTRICAL WORKS	ABU DHABI	3,850,000.00	NOVEMBER 1995
53	BAB SAFETY AND OFFICE BUILDING	GASCO	ARAB CONSULTANT	ELECTRO MECHANICAL WORKS	ABU DHABI	2,985,000.00	JANUARY 1996
54	INTERNAL ROADS FOR 300 LOW COST HOUSES IN WADI	PUBLIC WORKS DEPARTMENT, ABU DHABI	WADE ADAMS UAE (WLL)	ELECTRO MECHANICAL WORKS	ABU DHABI	434,000.00	AUGUST 1996
55	COMM. BLDG. FOR MR.RASHID BIN MUBARAK BIN SAIF AL REAMMY & SONS	RASHID BIN MUBARAK BIN SAIF AL REAMMY & SONS.	ADNAN SAFFARINI	ELECTRICAL WORKS	ABU DHABI	900,000.00	JUNE 1996



10.0 JOB REFERENCES

S.No.	Name of Project	Client	Consultant	Nature of Job	Location	Contract Amount in AED.	Completion Date
56	10 VILLAS FOR THE DEWAN OF H.H. THE CROWN PRINCE.	DEWAN OF H.H THE CROWN PRINCE	TEAM CONSULTANT	ELECTRICAL WORKS	ABU DHABI	890,000.00	AUGUST 1996
57	RESIDENTIAL COMPOUND FOR H.H.SH.HAZZA BIN ZAYED AL NAHYAN	H.H.SH.HAZZA BIN ZAYED AL NAHYAN	GHAZI AWAD ENGINEERING CONSULTANT	ELECTRICAL WORKS	ABU DHABI	995,000.00	OCTOBER 1996
58	DIAGNOSTIC CENTRE FOR ALLIED MEDI AL BAHRAIN EC	ALLIED MEDICAL BAHRAIN EC	SHADID ENGINEERING CONSULTANTS	ELECTRO MECHANICAL WORKS	DUBAI	2,635,000.00	NOVEMBER 1996
59	ZAKHER TOWER PH. II	H.E.SH.KHADEM BIN BUTTY AL HAMED	SYRCONSULT	ELECTRICAL WORKS	ABU DHABI	1,850,000.00	FEBRUARY 1997
60	GHANTOOT RACING CLUB, POLO STABLES & GRAND STAND	H.H.SH. ZAYED BIN SULTAN AL NAHYAN	CRSS INTERNATIONAL	ELECTRICAL & PLUMBING WORKS	ABU DHABI	3,250,000.00	AUGUST 1997
61	BUILDING & DISTRIBUTION OF SERVICES FOR STP	PUBLIC WORKS DEPARTMENT, AL AIN	PUBLIC WORKS DEPARTMENT, AL AIN	ELECTRO MECHANICAL WORKS	AL AIN	480,000.00	JANUARY 1998
62	COMM. BUILDING FOR AWQAF AL BAHARAN	DEPARTMENT OF SOCIAL SERVICES & COMM. BLDG.	DEWAN ARCHITECTS	ELECTRO MECHANICAL WORKS	ABU DHABI	3,555,000.00	JANUARY 1998
63	AL MANSOURY PLAZA – COMM. BULD. FOR MR.ALI MUBARAK AL MANSOURY	DEPARTMENT OF SOCIAL SERVICES & COMMERCIAL BUILDING	AL AIN CONSULTING ENGINEERS	ELECTRICAL WORKS	ABU DHABI	2,600,000.00	MAY 1998
64	CONSTRUCTION OF VILLA FOR SH.BUTI BIN AL OTAIBA.	H.H.SH.BUTI BIN AHAMED AL OTAIBA	KENNEDY & DONKINS	ELECTRO MECHANICAL WORKS	ABU DHABI	835,000.00	JULY 1998
65	RESIDENTIAL VILLA FOR H.H.SH. AHMED BIN HAMDAN AL NAHYAN	H.H.SH. AHMED BIN HAMDAN AL NAHYAN	TEAM CONSULT	ELECTRICAL & PLUMBING WORKS	ABU DHABI	2,000,000.00	OCTOBER 1998



10.0 JOB REFERENCES

S.No.	Name of Project	Client	Consultant	Nature of Job	Location	Contract Amount in AED.	Completion Date
66	GHANTOOT POLO NEW FIELD	ABU DHABI MUNICIPALITY	KEO INTERNATIONAL	ELECTRICAL WORKS.	ABU DHABI	2,123,000.00	DECEMBER 1998
67	SHOPPING CENTRE AND OFFICE BUILDING.	MR HAMIL BIN KHADIM AL GAITH	ARAB CONSULTANT	ELECTRICAL AND FIRE ALARM WORKS	ABU DHABI	10,800,000.00	JANUARY 1999
68	COMM. BLDG. FOR MR.MOHD BIN ABDULLA HUMAID AL RUMAITHY	DEPARTMENT FOR SOCIAL SERVICES & COMMERCIAL BUILDINGS	AL MEEDAN CONSULTANTS	ELECTRICAL & FIRE ALARM WORKS	ABU DHABI	2,035,000.00	JANUARY 1999
69	ABU DHABI TRIP CONTRACT NO.66-B	ABU DHABI MUNICIPALITY	DE LEUW CATHER INTL.	ELECTRICAL, PLUMBING, FIRE FIGHTING & AIR CONDITIONING	ABU DHABI	5,650,000.00	MARCH 1999
70	3 STOREY BUILDING FOR MR.HAMD KHADEM AL GHAITH	MR.HAMD KHADEM AL GHAITH	ADNAN SAFFARANI	ELECTRICAL & FIRE ALARM WORKS	DUBAI	3,800,000.00	AUGUST 1999
71	BLDG FOR MR YASSER SAEED AL OMRAN	DEPARTMENT OF SOCIAL SERVICES & COMMERCIAL BUILDINGS.	DEWAN CONSULTANT	ELECTRICAL WORKS	ABU DHABI	1,910,000.00	DECEMBER 1999
72	NEW POLICE STATION TYPE 'A', AL RAHABA CITY.	PUBLIC WORKS DEPT, ABU DHABI.	AREX INTL	ELECTRO MECH WORKS	ABU DHABI	11,400,000.00	JANUARY 2000
73	VIP SUITES FOR TAWAM HOSPITAL	TOWN PLANNING DEPT, AL AIN.	PARC INTL	ELECTRICAL & AIR CONDITIONING	AL AIN	4,100,000	FEBRUARY 2000
74	VILLAS AT THE PVT RESIDENTIAL PALACE.	H.H.SH SULTAN BIN KHALIFA BIN ZAYED AL NAHYAN	DEWAN CONSULTANT	ELECTRO MECHANICAL WORKS	ABU DHABI	2,706,000.00	AUGUST 2000
75	VILLA AT MAQTA BRIDGE	MR.MOHD.AL ABBAR	ITAL CONSULTANT	ELECTRO MECHANICAL & PLUMBING WORKS	ABU DHABI	2,200,000.00	AUGUST 2000
76	MILLENNIUM HOTEL IN SHARJAH	H.E.KHALAF BIN AHMED AL OTAIBA	SYRCONSULT	ELECTRICAL WORKS	SHARJAH	3,825,000.00	SEPTEMBER 2000
77	VILLAGES & ISLANDS ADMINISTRATION BUILDING	PUBLIC WORKS DEPARTMENT, ABU DHABI	ARAB CONSULTANT	ELECTRO MECHANICAL WORKS	ABU DHABI	5,550,000.00	OCTOBER 2000



10.0 JOB REFERENCES

S.No.	Name of Project	Client	Consultant	Nature of Job	Location	Contract Amount in AED.	Completion Date
66	GHANTOOT POLO NEW FIELD	ABU DHABI MUNICIPALITY	KEO INTERNATIONAL	ELECTRICAL WORKS.	ABU DHABI	2,123,000.00	DECEMBER 1998
67	SHOPPING CENTRE AND OFFICE BUILDING.	MR HAMIL BIN KHADIM AL GAITH	ARAB CONSULTANT	ELECTRICAL AND FIRE ALARM WORKS	ABU DHABI	10,800,000.00	JANUARY 1999
68	COMM. BLDG. FOR MR.MOHD BIN ABDULLA HUMAID AL RUMAITHY	DEPARTMENT FOR SOCIAL SERVICES & COMMERCIAL BUILDINGS	AL MEEDAN CONSULTANTS	ELECTRICAL & FIRE ALARM WORKS	ABU DHABI	2,035,000.00	JANUARY 1999
69	ABU DHABI TRIP CONTRACT NO.66-B	ABU DHABI MUNICIPALITY	DE LEUW CATHER INTL.	ELECTRICAL, PLUMBING, FIRE FIGHTING & AIR CONDITIONING	ABU DHABI	5,650,000.00	MARCH 1999
70	3 STOREY BUILDING FOR MR.HAMD KHADEM AL GHAITH	MR.HAMD KHADEM AL GHAITH	ADNAN SAFFARANI	ELECTRICAL & FIRE ALARM WORKS	DUBAI	3,800,000.00	AUGUST 1999
71	BLDG FOR MR YASSER SAEED AL OMRAN	DEPARTMENT OF SOCIAL SERVICES & COMMERCIAL BUILDINGS.	DEWAN CONSULTANT	ELECTRICAL WORKS	ABU DHABI	1,910,000.00	DECEMBER 1999
72	NEW POLICE STATION TYPE 'A', AL RAHABA CITY.	PUBLIC WORKS DEPT, ABU DHABI.	AREX INTL	ELECTRO MECH WORKS	ABU DHABI	11,400,000.00	JANUARY 2000
73	VIP SUITES FOR TAWAM HOSPITAL	TOWN PLANNING DEPT, AL AIN.	PARC INTL	ELECTRICAL & AIR CONDITIONING	AL AIN	4,100,000	FEBRUARY 2000
74	VILLAS AT THE PVT RESIDENTIAL PALACE.	H.H.SH SULTAN BIN KHALIFA BIN ZAYED AL NAHYAN	DEWAN CONSULTANT	ELECTRO MECHANICAL WORKS	ABU DHABI	2,706,000.00	AUGUST 2000
75	VILLA AT MAQTA BRIDGE	MR.MOHD.AL ABBAR	ITAL CONSULTANT	ELECTRO MECHANICAL & PLUMBING WORKS	ABU DHABI	2,200,000.00	AUGUST 2000
76	MILLENNIUM HOTEL IN SHARJAH	H.E.KHALAF BIN AHMED AL OTAIBA	SYRCONSULT	ELECTRICAL WORKS	SHARJAH	3,825,000.00	SEPTEMBER 2000
77	VILLAGES & ISLANDS ADMINISTRATION BUILDING	PUBLIC WORKS DEPARTMENT, ABU DHABI	ARAB CONSULTANT	ELECTRO MECHANICAL WORKS	ABU DHABI	5,550,000.00	OCTOBER 2000



10.0 JOB REFERENCES

S.No.	Name of Project	Client	Consultant	Nature of Job	Location	Contract Amount in AED.	Completion Date
78	CONSTRUCTION OF VILLAS	DUBAI MUNICIPALITY	ARABESQUE ENGG	ELECTRICAL WORKS	DUBAI	1,472,000.00	DECEMBER2000
79	G+4 OFFICE COMPLEX FOR GENERAL PETROLEUM	EMARAT DUBAI	ARENCO	ELECTRICAL & PLUMBING WORK.	DUBAI	10,800,000.00	JANUARY 2001
80	EXTERNAL WORKS FOR CAMP IN QUFFAI ISLAND.	GENERAL HEAD QUARTERS OF UAE ARMED FORCES.	ENGG. CORPORATION OF UAE ARMED FORCES.	ELECTRICAL WORKS	ABU DHABI	4,800,000.00	JANUARY 2001
81	PRE FABRICATED OFFICES & HALL AT SHARIA JUDICIAL COURT	PUBLIC WORKS DEPARTMENT, ABU DHABI	AL SHAHAMA	ELECTRICAL WORKS	ABU DHABI	1,445,000.00	FEBRUARY 2001
82	BREAK WATER DEVELOPMENT CONTRACT 987	TOWN PLANNING – ABU DHABI MUNICIPALITY	DE LEUW CATHER INTL.	ELECTRICAL WORKS	ABU DHABI	2,400,000.00	MAY 2001
83	ABU DHABI TRIP 66C	ABU DHABI MUNICIPALITY	DE LEUW CATHER INTL	ELECTRO MECHANICAL WORKS	ABU DHABI	10,625,000.00	JUNE 2001
84	DUBAI VILLAS	DUBAI MUNICIPALITY		ELECTRICAL & PLUMBING	DUBAI	1,492,800.00	JULY 2001
85	BLDGS AND REST HOUSES FOR RADAR SITES	GENERAL HEAD QUARTERS OF UAE ARMED FORCES.	ENGG. CORPORATION OF UAE ARMED FORCES.	ELECTRO MECHANICAL WORKS	ABU DHABI	600,000.00	OCTOBER 2001
86	RUWAIS HOUSING COMPLEX EXPANSION 320 FLATS – PACKAGE 3 PROJECT 1215	ABU DHABI NATIONAL OIL COMPANY.	CRSS	ELECTRICAL WORKS	ABU DHABI	17,600,000.00	JANUARY 2002
87	COMM BLDG FOR H.H.CROWN PRINCE	H.H.SH KHALIFA BIN ZAYED PVT OFFICE.	PLANNER INTL	ELECTRICAL & FIRE ALARM	ABU DHABI	2,625,000	JANUARY 2002
88	VILLA FOR H.H.SH SULTAN BIN KHALIFA BIN ZAYED AL NAHYAN	PVT. OFFICE OF H.H.SH SULTAN BIN KHALIFA BIN ZAYED AL NAHYAN	DEWAN ARCHITECTS & IAN BANHAM	ELECTRO MECHANICAL WORKS	ABU DHABI	5,000,000.00	FEBRUARY2002
89	NEW HORSE TRACKS AT RACING AND EQUESTRIAN CLUB	RACING & EQUESTRIAN CLUB	ASCO CONSULTAINT	ELECTRICAL WORKS	QATAR	5,715,000.00	MARCH 2002
90	RENOVATION AND DECORATION OF ADWEA H.Q. BUILDING	ABU DHABI WATER & ELECTRICITY AUTHORITY.	ARCHITECTURAL & PLANNING CORPN	ELECTRO MECHANICAL WORKS	ABU DHABI	2,710,000.00	MARCH 2002



10.0 JOB REFERENCES

S.No.	Name of Project	Client	Consultant	Nature of Job	Location	Contract Amount in AED.	Completion Date
91	MINA MUSSAFAH	PUBLIC WORKS DEPT., ABU DHABI.	HALCROW CONSULTANT	ELECTROMECHANICAL WORKS	ABU DHABI	17,140,000.00	MAY 2002
92	OPERATION & MAINTENANCE OF ELECTRO MECH. EQUIPMENT SYSTEM AT EMARAT H.O. COMPLEX. Tender TN/OPS/45/97	EMARAT - DUBAI	ARENCO	ELECTRO MECHANICAL WORKS.	DUBAI	600,000.00	DECEMBER 2002
93	COMMERCIAL BUILDING	H.H.SH.SULTAN BIN ZAYED AL NAHYAN	CRANG & BOAKE	ELECTRICAL WORKS	ABU DHABI	5,750,000.00	OCTOBER 2002
94	PARKING STRUCTURE, SECTOR E-3 (PE3)	ABU DHABI MUNICIPALITY	DE LEUW CATHER INTL.	ELECTRO MECHANICAL WORKS	ABU DHABI	6,500,000.00	FEBRUARY 2003
95	ABU DHABI INDUSTRIAL CITY	GENERAL INDUSTRIAL CORPORATION	W.S.ATKINS	ELECTRO MECHANICAL WORKS	ABU DHABI	17,000,000.00	MARCH 2003
96	CONSTRUCTIN OF EURO TECH FACTORY	EUROTECH FZCO	AL JASSIM ENGINEERING	ELECTRO MECHANICAL WORKS	JABEL ALI	1,200,000.00	SEPTEMBER 2003
97	PASSENGERS RESTAURANT VESSEL FOR THE CREEK OF DUBAI	BATEAUX DUBAI	SEINE DESIGN	ELECTRO MECHANICAL WORKS	DUBAI	2,233,000.00	NOVEMBER 2003
98	CONSTRUCTION OF 50 VILLAS & OTHER FACILITIES- RAS GUMAIS.	GENERAL HEAD QUARTERS OF UAE ARMED FORCES.	ENGG. CORPORATION OF UAE ARMED FORCES.	ELECTRO MECHANICAL WORKS	RAS GHUMAIS	4,500,000.00	DECEMBER 2003
99	THE BRITISH SCHOOL AT KHUBAIRAT – PHASE 3.	BOARD OF GOVERNORS – AL KHUBAIRAT COMMUNITY.	GIBB LTD.	ELECTRO MECHANICAL WORKS	ABU DHABI	6,400,000.00	JANUARY 2004
100	VILLA COMPOUND (30 VILLAS)	FIRST GULF BANK.	W.S.ATKINS	ELECTRO MECHANICAL WORKS	ABU DHABI	5,300,000.00	APRIL 2004
101	BOARDING BARGE FOR BATEAUX PARISIENS	BATEAUX PARISIENS	SEINE DESIGN	ELECTRICAL WORKS	DUBAI	400,000.00	APRIL 2004
102	DUBAI LAND SALES OFFICE.	DUBAI TOURISM & DEVELOPMENT CO.	W.S.ATKINS.	ELECTRO MECHANICAL WORKS	DUBAI	5,560,000.00	MAY 2006



10.0 JOB REFERENCES

S.No.	Name of Project	Client	Consultant	Nature of Job	Location	Contract Amount in AED.	Completion Date
91	MINA MUSSAFAH	PUBLIC WORKS DEPT., ABU DHABI.	HALCROW CONSULTANT	ELECTROMECHANICAL WORKS	ABU DHABI	17,140,000.00	MAY 2002
92	OPERATION & MAINTENANCE OF ELECTRO MECH. EQUIPMENT SYSTEM AT EMARAT H.O. COMPLEX. Tender TN/OPS/45/97	EMARAT - DUBAI	ARENCO	ELECTRO MECHANICAL WORKS.	DUBAI	600,000.00	DECEMBER 2002
93	COMMERCIAL BUILDING	H.H.SH.SULTAN BIN ZAYED AL NAHYAN	CRANG & BOAKE	ELECTRICAL WORKS	ABU DHABI	5,750,000.00	OCTOBER 2002
94	PARKING STRUCTURE, SECTOR E-3 (PE3)	ABU DHABI MUNICIPALITY	DE LEUW CATHER INTL.	ELECTRO MECHANICAL WORKS	ABU DHABI	6,500,000.00	FEBRUARY 2003
95	ABU DHABI INDUSTRIAL CITY	GENERAL INDUSTRIAL CORPORATION	W.S.ATKINS	ELECTRO MECHANICAL WORKS	ABU DHABI	17,000,000.00	MARCH 2003
96	CONSTRUCTIN OF EURO TECH FACTORY	EUROTECH FZCO	AL JASSIM ENGINEERING	ELECTRO MECHANICAL WORKS	JABEL ALI	1,200,000.00	SEPTEMBER 2003
97	PASSENGERS RESTAURANT VESSEL FOR THE CREEK OF DUBAI	BATEAUX DUBAI	SEINE DESIGN	ELECTRO MECHANICAL WORKS	DUBAI	2,233,000.00	NOVEMBER 2003
98	CONSTRUCTION OF 50 VILLAS & OTHER FACILITIES- RAS GUMAIS.	GENERAL HEAD QUARTERS OF UAE ARMED FORCES.	ENGG. CORPORATION OF UAE ARMED FORCES.	ELECTRO MECHANICAL WORKS	RAS GHUMAIS	4,500,000.00	DECEMBER 2003
99	THE BRITISH SCHOOL AT KHUBAIRAT – PHASE 3.	BOARD OF GOVERNORS – AL KHUBAIRAT COMMUNITY.	GIBB LTD.	ELECTRO MECHANICAL WORKS	ABU DHABI	6,400,000.00	JANUARY 2004
100	VILLA COMPOUND (30 VILLAS)	FIRST GULF BANK.	W.S.ATKINS	ELECTRO MECHANICAL WORKS	ABU DHABI	5,300,000.00	APRIL 2004
101	BOARDING BARGE FOR BATEAUX PARISIENS	BATEAUX PARISIENS	SEINE DESIGN	ELECTRICAL WORKS	DUBAI	400,000.00	APRIL 2004
102	DUBAI LAND SALES OFFICE.	DUBAI TOURISM & DEVELOPMENT CO.	W.S.ATKINS.	ELECTRO MECHANICAL WORKS	DUBAI	5,560,000.00	MAY 2006



10.0 JOB REFERENCES

S.No.	Name of Project	Client	Consultant	Nature of Job	Location	Contract Amount in AED.	Completion Date
122	OFFICERS'S ACCOMODATION – ZONE C 96 VILLAS.	G.H.Q. ARMED FORCES	KHATIB & ALAMI	ELECTRO MECHANICAL WORKS	ABU DHABI	33,300,000.00	OCTOBER 2014
123	COMMERCIAL & RESIDENTIAL BUILDING C40, RAWDHAT	ALI & SONS CO.LLC	IAN BANHAM & ASSCIATES	ELECTRO MECHANICAL WORKS	ABU DHABI	18,571,622.00	AUGUST 2015